


The Role of Power BI in Modern Business Analytics

This whitepaper delves into the pivotal role that Power BI plays in modern business analytics, exploring its key features, benefits, and real-world applications.



Explore how Power BI can be leveraged to elevate your business intelligence (BI) strategy

 www.cobit-solutions.com

 sales@cobit-solutions.com

 SemanticWell LLC
680 S Alton way, Denver, CO 80247

Executive Summary



In today's data-driven business landscape, companies are constantly seeking innovative solutions to harness the power of data for better decision-making and competitive advantage. Power BI, a leading business analytics tool developed by Microsoft, has emerged as a transformative force in this space. It enables organizations to collect, analyze, and visualize data in ways that were previously impossible, driving insights that can directly influence business strategy.

Welcome!

This whitepaper delves into the pivotal role that Power BI plays in modern business analytics, exploring its key features, benefits, and real-world applications. By the end of this paper, you'll have a clear understanding of how Power BI can be leveraged to elevate your business intelligence (BI) strategy, streamline operations, and drive growth.

Introduction



The rise of big data has transformed the way businesses operate. Organizations now have access to vast amounts of information, but without the right tools, this data remains untapped potential. The challenge lies in making sense of this data quickly and effectively.

Power BI addresses this challenge by providing a powerful yet intuitive platform for data analytics and visualization. Whether you're a small business or a multinational corporation, Power BI can help you turn raw data into actionable insights.

The Growing Need for Business Analytics

As businesses become more digital, they generate increasing amounts of data from customer interactions, sales, marketing, supply chain, and internal operations. Leveraging this data is no longer a luxury; it's a necessity for survival in a competitive market. Modern business analytics allows companies to:

01 Identify trends

Spot emerging market trends and shifts in consumer behavior.

02 Optimize operations

Make data-driven decisions to streamline workflows and reduce inefficiencies.

03 Improve customer experiences

Personalize products and services to meet evolving customer expectations.

04 Predict future outcomes

Use predictive analytics to foresee market changes and customer demands.

However, the real challenge lies in harnessing this data effectively. This is where Power BI steps in, making data accessible and actionable for all users, regardless of their technical expertise.



Future Trends in Business Analytics

The Role of AI in BI Tools

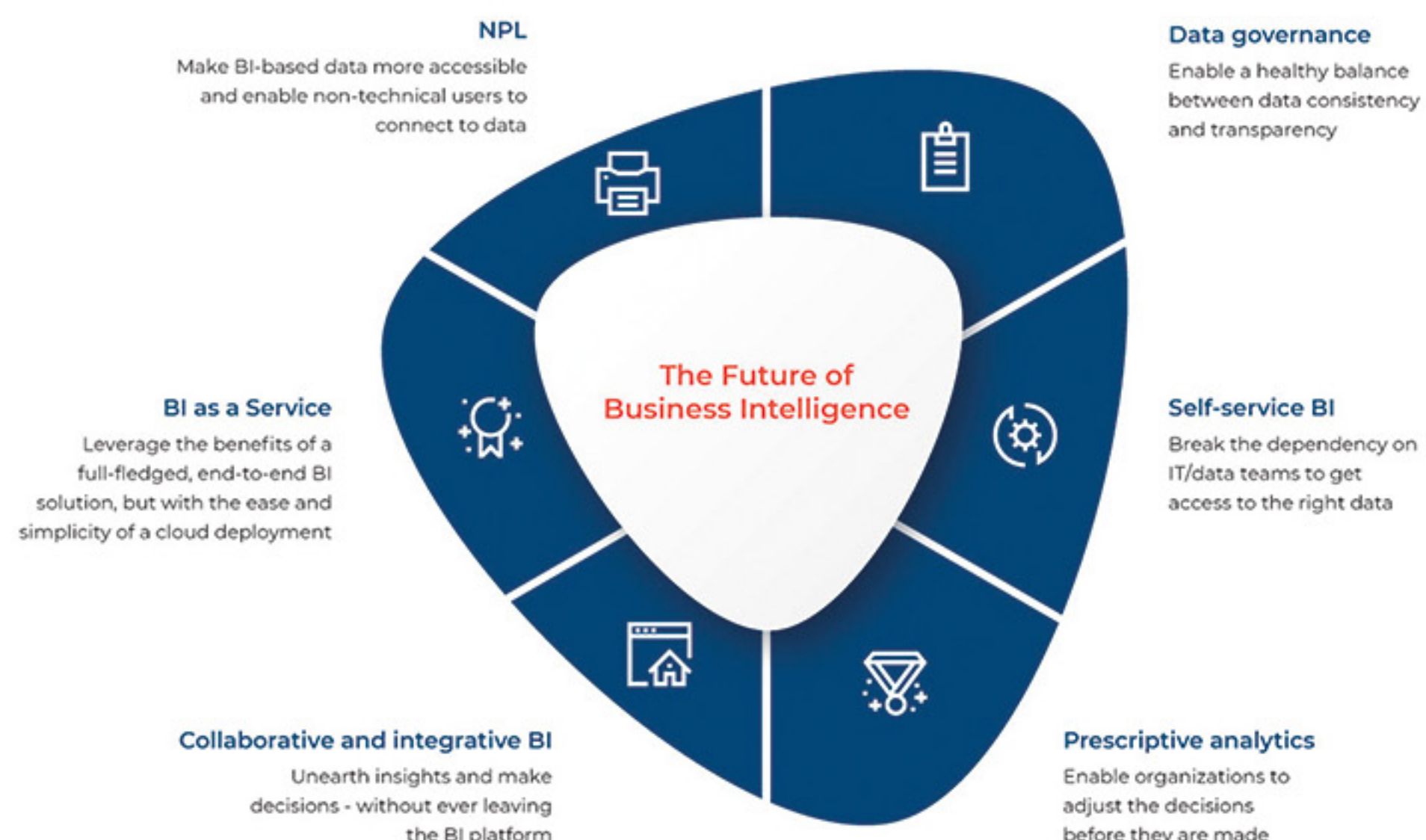
The integration of AI into business analytics tools like Power BI is only set to grow. With features like machine learning algorithms, natural language processing, and predictive analytics, businesses will have more power than ever to uncover insights hidden in their data.

The Evolution of Self-Service Analytics

The integration of AI into business analytics tools like Power BI is only set to grow. With features like machine learning algorithms, natural language processing, and predictive analytics, businesses will have more power than ever to uncover insights hidden in their data.

Data Literacy as a Competitive Advantage

The integration of AI into business analytics tools like Power BI is only set to grow. With features like machine learning algorithms, natural language processing, and predictive analytics, businesses will have more power than ever to uncover insights hidden in their data.





What is Power BI?



Power BI is a cloud-based business analytics service that enables users to connect to, visualize, and share insights from their data. It integrates with a wide variety of data sources—both on-premise and cloud-based—and allows users to build comprehensive reports and dashboards that are easy to understand and share across an organization.

6 million
users

are using Power BI according to Gartner

97%
of Fortune 500

companies using Power BI to democratize data insights.



“Microsoft Power BI has helped us drive our competitive advantage and continue to elevate our position in the industry.

Billy Bardin,
Global Digitalization Director at Dow



Magic Quadrant for Analytics and Business Intelligence Platforms

Microsoft is a Leader in this Magic Quadrant. Its primary ABI platform, Power BI, has massive market reach and momentum through Microsoft 365, Azure and Teams integration, flexible pricing, well-above-average functionality, and an ambitious product road-map.



Why Power BI?

With Power BI, it takes five minutes to start creating personalized dashboards and to find answers to the most important questions for your business.

Top 6 reasons for using the Power BI Analytics solution in your business:



Real-Time Insights

You don't have to wait around and worry about how old and in-accurate report data is anymore



Artificial Intelligence

Power BI users can access image recognition and text analytics, create machine learning models, and integrate with Azure Machine Learning.



Highly Cost Effective

Power BI is a perfect solution in terms of cost-effectiveness for all types of scaled organizations, from small-scale to large-scale enterprises or companies to organizations



Data Connection

It can connect to more than 70 on-premises and cloud datasources to turn information into interactive visuals.



Dashboards and Visualization

Dashboards update in real time, as data is pushed or streamed in, which gives viewers the ability to solve problems and identify opportunities quickly.



Enhanced Data Governance

Power BI allows you to manage security, user access and security from a single interface, eliminating the need for additional solutions to ensure strict compliance and regulatory standards are met.

Traditional BI tools, such as Tableau, Qlik, etc., are solutions for analysts that provide rearview mirror intelligence on what has happened. In contrast, Power BI is business analytics service that can empower everyone—not just data specialists—with real-time insight to what is happening.

Power BI lets you access real-time information to identify trends early, that way, you can head off potential issues and improve performance sooner rather than later. With advanced analytics integration you can use your data to predict outcomes for your business. Predictive intelligence help you stay on the right path to achieve your goals.



Key Applications of Power BI in Modern Business



Power BI's versatility means it can be applied across numerous sectors and business functions. Here are some common applications:

1. Sales and Marketing Analytics

Businesses use Power BI to track customer behaviors, marketing campaign performance, and sales trends. By analyzing customer journey data, businesses can optimize their sales strategies, adjust marketing spend, and personalize outreach efforts to boost conversions.

2. Financial Reporting

Finance teams leverage Power BI to generate real-time financial reports, monitor cash flow, and track key financial metrics. The tool's ability to integrate with ERP systems enables businesses to gain a deeper understanding of their financial health and make more informed budgeting decisions.

3. Supply Chain Optimization

Power BI is used to monitor supply chain performance in real time, from inventory levels to supplier performance. Predictive analytics can also forecast demand, helping businesses avoid overproduction or stock shortages.

4. HR Analytics

Human Resources departments utilize Power BI to track employee performance, monitor retention rates, and analyze workforce demographics. By understanding these metrics, companies can make data-driven decisions to improve employee satisfaction and reduce turnover.

5. Customer Service

Power BI dashboards allow customer service teams to track response times, analyze customer feedback, and monitor support ticket trends. This enables companies to identify pain points and improve the overall customer experience.

Power BI in Industry Sectors

Power BI's versatility means it's widely applicable across various industry sectors. Here's a look at how different industries leverage Power BI to solve their unique challenges:

Manufacturing

In manufacturing, Power BI can track production efficiency, monitor machine performance, and analyze production bottlenecks. With real-time dashboards, plant managers can react swiftly to operational issues and improve overall equipment effectiveness (OEE). Additionally, Power BI's predictive analytics can help forecast demand, reducing inventory costs and optimizing the supply chain.

Retail and E-commerce

Retailers use Power BI to analyze customer behavior, track sales performance across channels, and optimize inventory levels. By integrating data from point-of-sale systems, website analytics, and customer feedback, Power BI provides a comprehensive view of customer journeys, helping retailers enhance customer satisfaction and increase revenue.

Healthcare

Power BI plays a crucial role in healthcare analytics by helping hospitals and clinics optimize patient care, reduce operational inefficiencies, and manage resources more effectively. With data integration from electronic health records (EHRs), Power BI provides actionable insights into patient outcomes, resource utilization, and treatment efficacy.

Financial Services

Financial institutions use Power BI to gain a deeper understanding of risk, improve compliance reporting, and analyze customer data for personalized financial advice. Power BI helps banks and insurers track key financial metrics in real-time, streamlining reporting processes and uncovering growth opportunities.

Logistics and Distribution

Power BI is essential in logistics and distribution by offering real-time insights into supply chain performance, inventory, and delivery schedules. It enables managers to track the entire distribution process, from warehousing to transportation, and optimize routes or reduce lead times. Integration with WMS and TMS allows businesses to boost logistics efficiency, cut costs, and improve customer satisfaction by ensuring timely deliveries.



Advanced Power BI Features



Power BI isn't just about basic reporting—it comes packed with advanced features that cater to complex data needs.

● Embedded Analytics

Power BI Embedded allows organizations to integrate dashboards and reports into their own applications. This makes it possible for companies to deliver analytics directly to customers, partners, or employees within the platforms they already use, enhancing user experience and providing immediate insights.

● Custom Visualizations

Beyond the standard visualizations, Power BI's marketplace offers a wide range of custom visuals that businesses can use to create specialized charts, graphs, and reports. For unique business needs, developers can even create their own custom visualizations using Power BI's open-source framework.

● Power Query for Data Transformation

Power Query allows users to connect, combine, and transform data from various sources easily. This data preparation tool helps businesses clean and shape their data without requiring deep technical expertise, ensuring that only high-quality, usable data is fed into the analytics workflow.

● DAX (Data Analysis Expressions)

For more complex data modeling, Power BI includes DAX, a powerful formula language. DAX allows analysts to create custom calculations and measure KPIs with precision, giving businesses deeper insights into their data. Whether it's calculating year-over-year growth or tracking customer acquisition costs, DAX makes it possible to tailor analytics to the business's specific needs.

● Mobile Analytics

Power BI's mobile app allows users to access and interact with reports and dashboards on the go. This feature is particularly valuable for executives and managers who need access to real-time data while traveling or working remotely. The mobile experience is optimized for touch interactions, ensuring users can easily view and manipulate data.

Power BI Security and Compliance

Data security is paramount in today’s business environment. Power BI is built with enterprise-grade security features to ensure data integrity, privacy, and compliance with global standards.

01 Data Governance

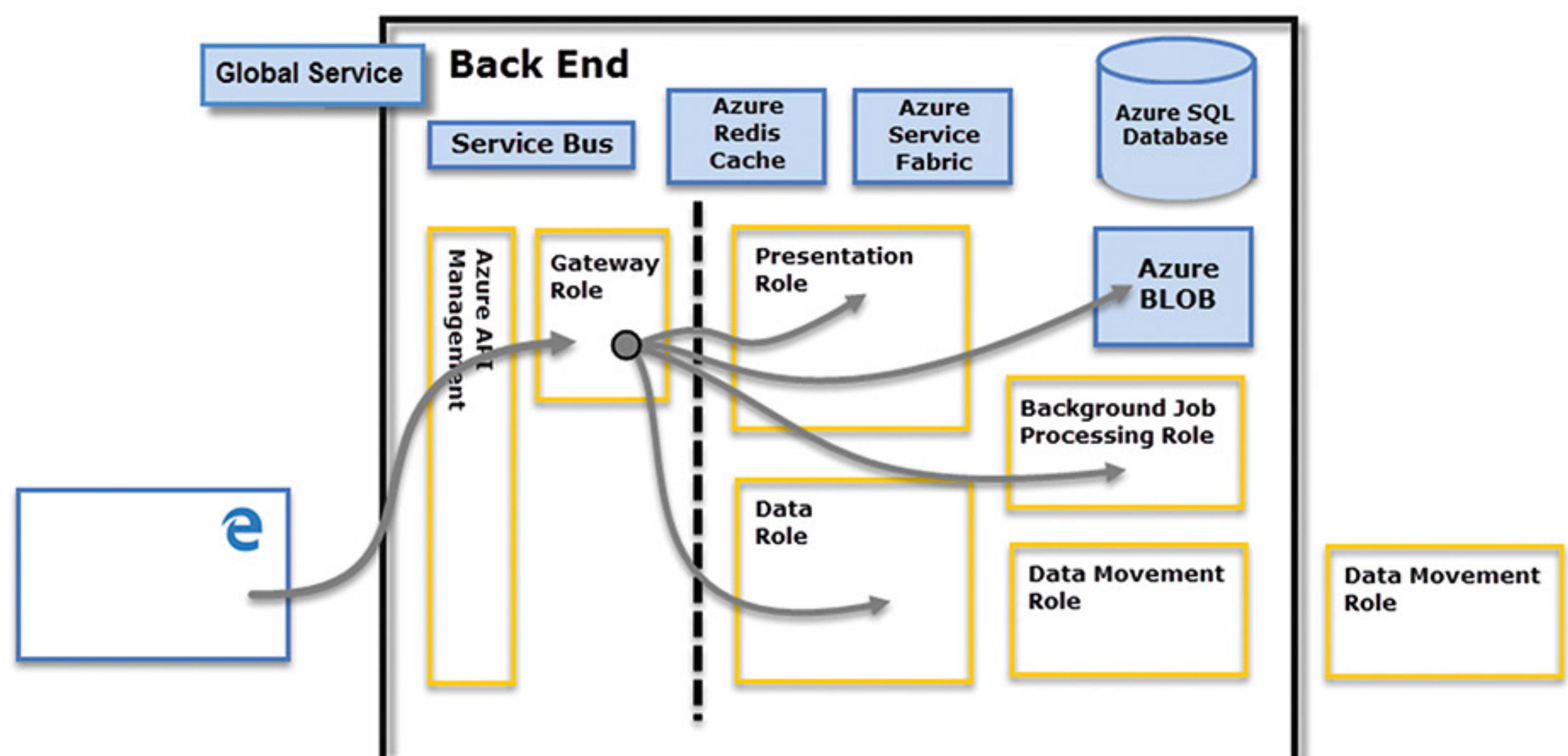
Power BI offers robust data governance capabilities, enabling businesses to establish clear policies around data usage and access. Organizations can track how data is being used, ensuring compliance with internal and external regulations.

02 Compliance with Global Standards

Power BI is compliant with international standards such as GDPR, HIPAA, and SOC 2, making it a secure choice for industries that require strict data protection protocols. This is particularly important for businesses in healthcare, finance, and legal industries.

03 Security Features

- **Row-Level Security:** Power BI allows administrators to define who can see what data, ensuring sensitive information is only accessible to authorized users.
- **Role-Based Access:** Role-based security ensures that users can only interact with the data they are permitted to access. This feature allows businesses to maintain data confidentiality while providing access to relevant insights for different departments or roles.



Popular questions about Power BI

01 Which other cost do I have to consider for the implementation of Power BI?

Our service cost covers the basic installation of the system, ensuring a seamless start. Additional implementation expenses, including configuration, employee training, data migration, and detailed customization, will depend on the scale of your project and system usage. For a personalized quote tailored to your needs, please reach out to us. We're here to help you every step of the way.

02 Can Power BI integrate with other manufacturing systems?

Absolutely. Power BI seamlessly integrates with various manufacturing systems, including ERP and CRM platforms, to provide a unified view of your operations and enhance data connectivity.

03 What makes Power BI a better choice over other BI tools for manufacturing?

Power BI's integration with Microsoft products, cost-efficiency, ease of use, and advanced analytics capabilities make it a superior choice for manufacturing businesses looking to enhance their data visualization and decision-making processes.

04 How is Power BI different from traditional BI implementations?

Power BI is part of a new wave of next generation Business Intelligence (BI) tools. In comparing them to traditional BI implementations there are a number of differences, but the two key differences are: Cloud vs On-Premise and Self-Service vs Guided Analytics.



Case study:

Transforming Leading Energy Company Operations with Power BI

DonbasEnergo, a company with nearly a century of history, is an energy-generating company that successfully integrates innovative solutions into traditional production.

In 2020, Cobit Solutions embarked on a project to develop comprehensive Power BI dashboards for the C-level executives of DonbasEnergo, focusing on key energy metrics and market analysis.

Challenges and Solutions

DonbasEnergo needed advanced analytics to manage its diverse operations effectively. The challenge was to create custom dashboards that could provide real-time insights into energy metrics, market conditions, fuel usage, and financial performance. The goal was to enable the company's leadership to make data-driven decisions based on comprehensive data analysis. Additionally, they needed a solution to quickly and accurately determine the actual cost of energy production, which was previously only known with a two-month delay.

Results

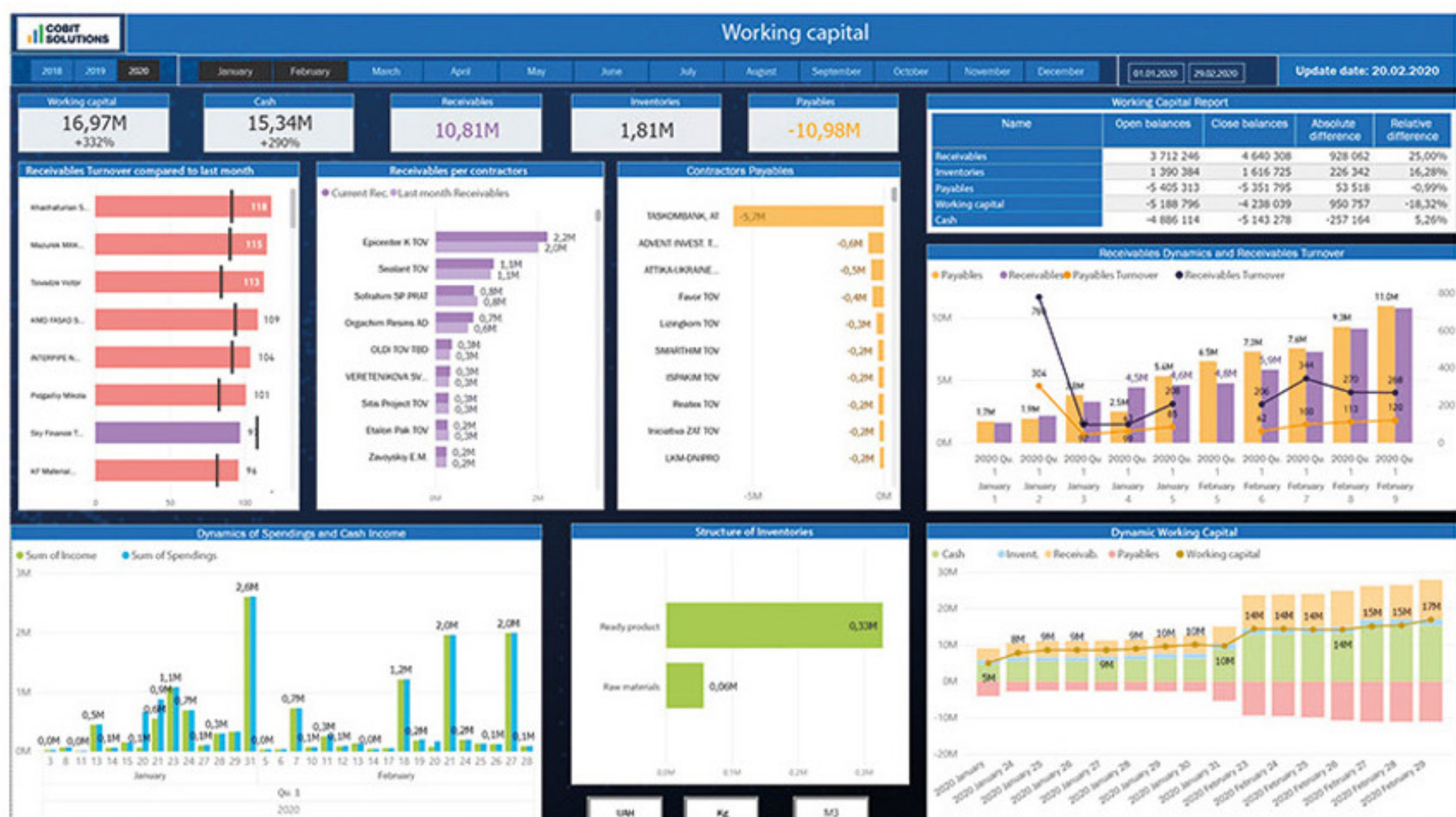


Our team developed a series of Power BI dashboards tailored to DonbasEnergo's needs:

- Energy Metrics Dashboard
- Fuel Analytics Dashboard
- Market Segment Analysis
- P&L Dashboard

saved **30%**
of working time on
manual reporting

by **15%**
increased their profits



About Cobit Solutions

Cobit Solutions is a data analytics and business intelligence company that specializes in Power BI, Azure, SSIS, SSAS, AI/ML, ETL, and DWH. With over 70 successful cases across 22 industries we're trusted by companies like Lacoste, Alpha Serve, Meest China, Swiss Energy, Ajax, and many other.

Services

- BI & analytics staff augmentation
- Turnkey Power BI consulting
- Data sources integration (ETL)
- Dashboard (DAX) development services
- BI implementation strategy design
- AI/ML projects implementation
- Data warehouse (DWH) implementation



REVIEWED ON  **Clutch** 25 REVIEWS

REVIEWED ON  **UpCity** 5 STARS



EXCELLENT  **GoodFirms** BASED ON 10 REVIEWS

Get a special, no-cost preview of what your future Power BI dashboard could look like.

Leave a request to get all the details. In just a couple of days you will receive a complete dashboard wireframe.



Why Cobit Solutions

- Quick start and first **results in 2 weeks**
- We are **-25% less** than W2 payroll or contractors
- **6 years** of industry experience
- Over **70 satisfied clients** in North America and other countries
- **150+ years of IT experience** among employees Turnkey strategy to dashboard

Cost Details

Fact: 01 - 12

Operplan: -

Cost analysis by cost items

Cost Plan, UAH	Plan Share in sales	Fact Expenses, UAH	Fact Share in sales	% of plan implementation	Deviations from the plan
290 648 681	3,6%	10 141 268 526	1,8%	236%	5 850 619 845
290 648 681	3,6%	10 141 268 526	1,8%	236%	5 850 619 845
566 094 330	0,5%	1 029 851 367	0,2%	182%	463 757 037
520 581 254	0,4%	2 776 350	0,0%	1%	-517 804 904
3 748 755					-3 748 755
68 811 098					-68 811 098
15 621 463					-15 621 463
648 246 803	6,5%	22 867 715 919	4,1%	299%	15 219 469 116

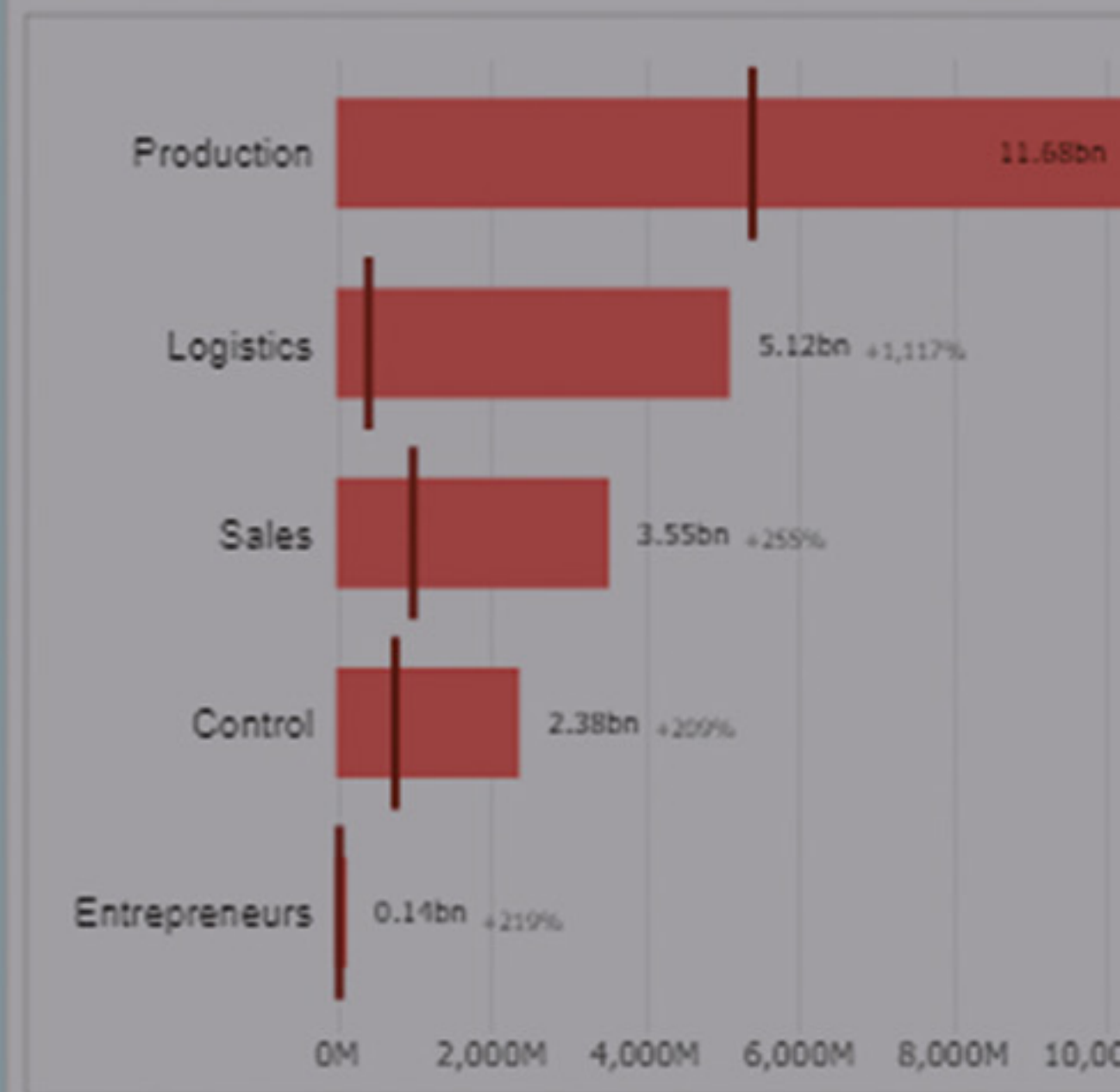
FRC cost analysis

Cost Plan, UAH	Plan Share in sales	Fact Expenses, UAH	Fact Share in sales	% of plan implementation	Deviations from the plan
770 826 144		2 381 876 966		309%	1 611 050 821
369 871 870		1 662 803 021		450%	1 292 931 151
		13 469 459		no plan	13 469 459
		13 469 459		no plan	13 469 459
351 629 872		1 635 559 090		465%	1 283 929 219
7 648 246 803	6,5%	22 867 715 919	4,1%	299%	15 219 469 116

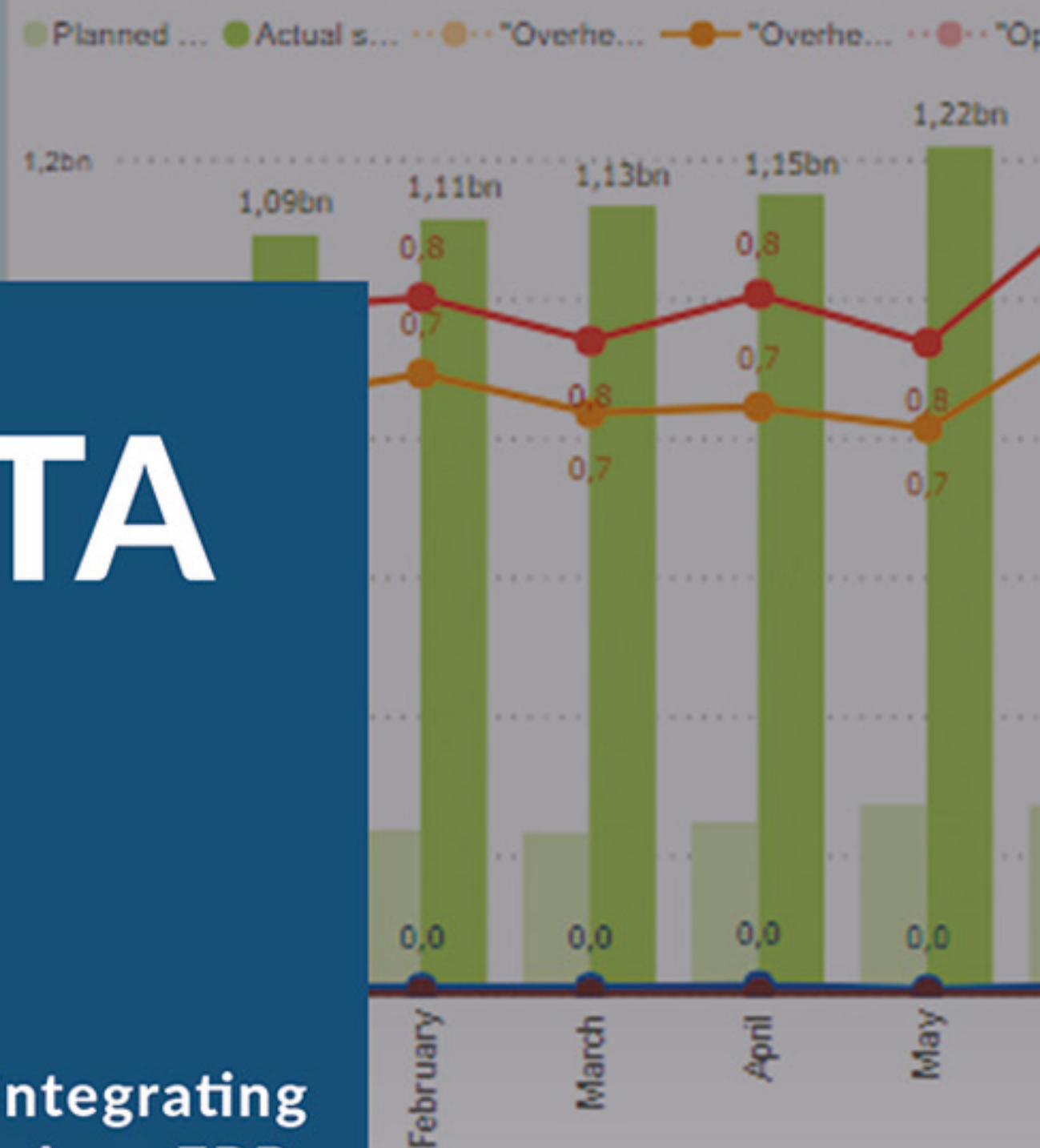
Salary with accruals

Trade marketing

Detail

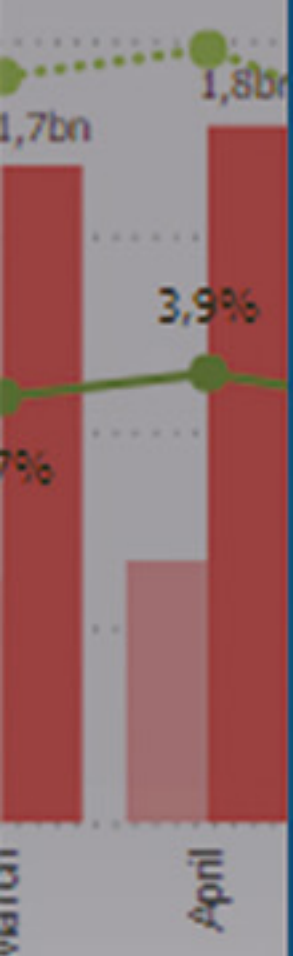


Dynamics of costs



Dynamics of the share of expenses in monthly revenue

Costs, UAH ● % share of expenses in revenue (plan) ● % share of expenses in revenue (fact)



GET A FREE DATA INTEGRATION STRATEGY



We'll provide a high-level roadmap for integrating Power BI with your existing systems, such as ERP, WMS, or TMS, to ensure a seamless transition to a more data-driven approach.